

# Visual Guide to the ASCL 2013



1 – In front of the university's main entrance at Ringstraße



2 – enter through main entrance



3 – In the foyer, turn left



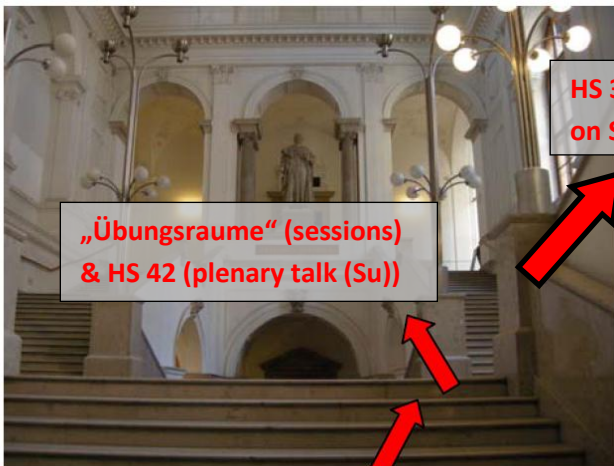
4 – climb the stairs



5 – through the glass door



6 – climb the next flight of stairs towards the imperial statue



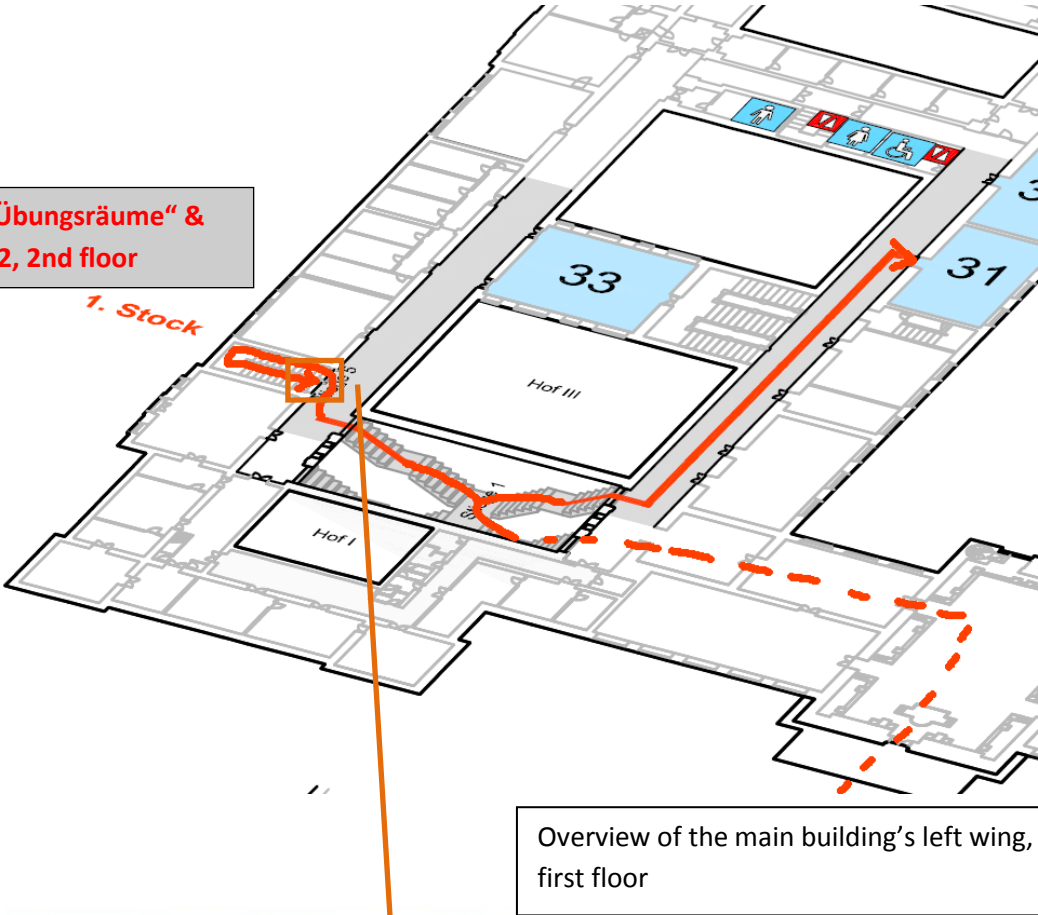
„Übungsraume“ (sessions)  
& HS 42 (plenary talk (Su))

HS 31 (Plenary talk  
on Saturday)

7 – and further from here

To „Übungsräume“ & HS 42, 2nd floor

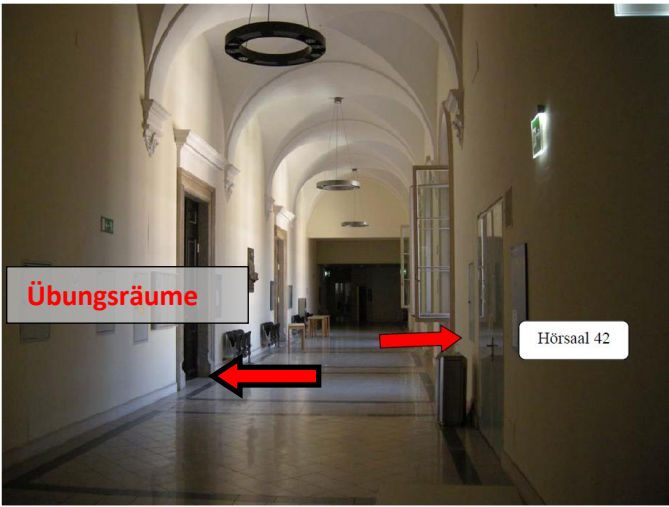
HS 31 (Plenary talk on Saturday), 1<sup>st</sup> floor



Overview of the main building's left wing, first floor



8 – the conference venues (except HS 31) are further up via staircase 5



9 – on the 2nd floor – Welcome!

**Conference bureau:**

The conference bureau is mobile! You find us in front of HS 31 on Saturday 8-8:45am, in front of the "Übungsräume" later.

